

# FUT SAL







# JOMA

**FRUCTUOSO LÓPEZ** starts manufacturing footwear with just 8 employees.

1965



Joma faces the challenge of globalization and attends the **ISPO** in Munich for the first time, the most important European trade fair in the sports industry.

1983



Joma launches the "**COLOR IN FOOTBALL**" campaign and revolutionizes the global football boot market.

Alfonso sports the white boots, while Morientes surprises with the red ones.

1996



Joma enters the Rio Olympics outfitting 10% of the athletes. The Spanish Olympic Committee (**COE**) and eight other Olympic committees choose Joma as their apparel provider that year.

2016



1969

In 1965, **JOMA** is founded, and in 1969, the first assembly line with 20 employees is established in Fuensalida.



1992

Joma becomes the leader in football boot sales. Fermín Cacho secures the **OLYMPIC GOLD** in the 1,500 meters at the Barcelona Games. In these Olympics, Alfonso earns the Gold medal with the Football National Team.



1999

The U.S. subsidiary is established in San Diego, named **JOMA USA INC.**



2024

As of today, Joma consists of nine subsidiaries, with notable presence in Italy, the United States, the United Kingdom, Germany, Brazil, and China. The brand has commercial presence in over **120 countries** and experiences an annual growth rate of 20%.

In the 2020 Tokyo Olympics, Joma has provided attire for over **1,500 ATHLETES** from **12 NATIONAL COMMITTEES**, including Spain, Portugal, Morocco, Jordan, Kazakhstan, Honduras, Malta, and Mauritius.





## EXERCISE YOUR FREEDOM

The image of athletes has always been Joma's best endorsement. Therefore, in the upcoming Olympic Games in Paris, the brand will outfit 8 national committees, including the Spanish Olympic Committee (COE). In the world's most significant sports event, the brand will also be represented by 18 federations across different disciplines, such as the Royal Federation of Athletics, the Handball Federation, or the Spanish Rugby Federation, among many others at the international level.

In football, Joma sponsors over 300 professional football teams, including Atalanta BC, Villarreal CF, ACF Swansea, Le Havre Athletic Club, RSC Anderlecht, TSG Hoffenheim, etc. They also sponsor national teams like Ukraine and Romania, among others. Thanks to these sponsorships, Joma is present in all major football leagues worldwide, international competitions, and the World Cup.

Joma is the leading Spanish futsal brand and ranks among the top ten brands globally. This position is supported by the trust placed in the brand by major international teams they currently sponsor, such as Carlos Barbosa in Brazil (the country's only five-time champion), Acqua & Sapone in Italy, Almaty in Kazakhstan, ElPozo Murcia Costa Cálida FS, and InterMovistar in Spain, among others. They also sponsor national teams from Kazakhstan, Romania, Ukraine, and Spain. The sponsorship of the Royal Spanish Futsal Federation and the official ball of the RFEF Futsal First Division, the Top Five Pentaforce, has elevated Joma's profile in international futsal. Hundreds of professional players test their products, making Joma futsal shoes recognized in the market for their quality and the use of the latest industry technology. Players like Pola, Bebe, Elissandro, Umberto, Gadeia, Guitta are part of the #JomaTeam. Additionally, they sponsor some of the world's best players, including **Ferrão**, **Pito**, and **Amandinha**.

All of this makes Joma the leading brand in the Spanish market and the third worldwide. This success is thanks to the efforts and support of thousands of professional athletes and fans who increasingly trust our brand every day. Joma will continue to work towards growth in the national and international sports market, focusing on innovation, technology, quality, design, and competitive prices.

# SPONSOR



# we are FUT SAL



Spain National Team

LNFS

LNFS  
(Spanish League)



Inter Movistar  
(Spain)



El Pozo Murcia  
(Spain)



F.S. Valdepeñas  
(Spain)



RSC Anderlecht  
(Belgium)



Romania  
National Team



Carlos Barbosa  
(Brazil)

# SPONSOR





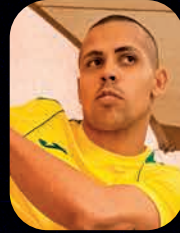
TESTED BY PROFESSIONAL FUTSAL PLAYERS



PITO



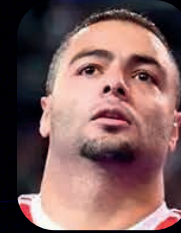
AMANDINHA



FERRÃO



DYEGO



EDER  
LIMA



MERLIM



ROBINHO



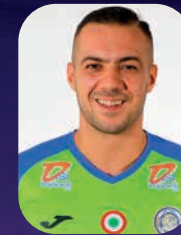
GADEIA



JUANJO



DOUGLAS



MAMMARELLA



SPONSOR





Joma Sport's business model is grounded in design, technological innovation, and the commitment to providing its customers with high-quality products at the best prices. Therefore, dedication to technology is essential.

Joma Sport invests over €45,000 per day in enhancing its products and implementing new systems and technologies.



PROTECTION

DURABILITY



EXO  
COUNTER



FLEX

FULL DUAL PULSOR

# TECHNOLOGY



# TOP-FLEX PLUS+

# we are  
**FUT  
SAL**



VENTILATION

PROTECTION  
PROTECTION



REACTIVITY

DUAL:REACTIVE  
REACTIVITY

STABILIS  
STABILITY

**DURABILITY**

DURABILITY



TESTED BY PROFESSIONAL FUTSAL PLAYERS



# TOP-FLEX PLUS+

# We are  
**FUT  
SAL**



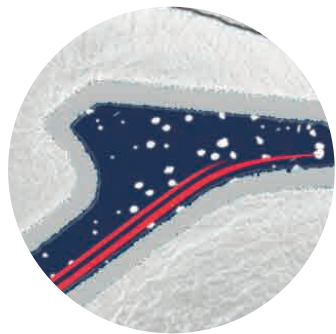
The new Top Flex Plus arrives, a remodeling of the classic Top Flex, which keeps its main features intact and reinforces cushioning, reactivity, and stability to maximize performance. Aimed at professional futsal.

Upper crafted with leather. This material is perfect for this sport due to its durability, flexibility, breathability, and good ball contact. Reinforced ventilation with **VTS** technology.

**PROTECTION** reinforcement on the toe.

**DUAL REACTIVE** midsole constructed with phylon to absorb impacts, further optimized with the rear **REACTIVE BALL**. This technology provides reactive cushioning for a more comfortable game. It features a **STABILIS** piece for superior stability.

**DURABILITY** rubber outsole with high resistance to abrasion and quality. It adheres to indoor surfaces without leaving marks on the court.



TESTED BY PROFESSIONAL FUTSAL PLAYERS



# TOP-FLEX PLUS+

# we are  
**FUT  
SAL**



**TOUW2502IN**



**TOUW2504IN**



TESTED BY PROFESSIONAL FUTSAL PLAYERS



# TOP-FLEX REBOUND

# we are  
**FUT  
SAL**



VENTILATION

PROTECTION

PROTECTION



REACTIVITY

DUAL:REACTIVE  
REACTIVITY

DURABILITY

DURABILITY



TESTED BY PROFESSIONAL FUTSAL PLAYERS





# TOP-FLEX REBOUND

# We are  
**FUT  
SAL**

Futsal shoes developed to achieve maximum performance. The Top Flex Rebound offer superior cushioning and reactivity. Comfort guaranteed in professional futsal.

The upper is crafted from leather. This material is perfect for this sport due to its durability, flexibility, breathability, and good ball contact. Reinforced ventilation with **VTS** technology.

**PROTECTION** reinforcement on the toe.

**DUAL REACTIVE** midsole with **REACTIVE BALL** technology on the bottom part, which absorbs and softens impacts and returns energy to the player.

**DURABILITY** rubber outsole with high resistance to abrasion and quality. It adheres to indoor surfaces without leaving marks on the court.



TESTED BY PROFESSIONAL FUTSAL PLAYERS





# TOP-FLEX REBOUND

# we are  
**FUT  
SAL**



TORS2501IN



TORS2502IN



TORS2504IN



TORS2505IN



TORS2506IN



TORS2511IN



TORS2512IN



TORS2532IN



TORS2576IN



TESTED BY PROFESSIONAL FUTSAL PLAYERS





**FERRÃO** | 3-TIME BEST FUTSAL  
PLAYER IN THE WORLD



WATCH VIDEO

WATCH VIDEO

WATCH VIDEO

WATCH VIDEO





# TOP-FLEX

# we are  
**FUT  
SAL**



VENTILATION

PROTECTION  
PROTECTION

**DURABILITY**

DURABILITY



TESTED BY PROFESSIONAL FUTSAL PLAYERS





# TOP-FLEX

# We are  
**FUT  
SAL**

Futsal shoes. The legendary futsal model famous among professional footballers continues with the quality, flexibility, and comfort that characterize it. Developed to achieve maximum performance.

The upper is crafted from leather. This material is perfect for this sport due to its durability, flexibility, breathability, and good ball contact. Reinforced ventilation with **VTS** technology.

**PROTECTION** reinforcement on the toe.

Phylon midsole for increased stability and cushioning.

**DURABILITY** rubber outsole with high resistance to abrasion and quality. It adheres to indoor surfaces without leaving marks on the court.



TESTED BY PROFESSIONAL FUTSAL PLAYERS





# TOP-FLEX

# we are  
**FUT  
SAL**



**TOPS2504IN**



**TOPS2527IN**



**TOPS2528IN**



**TOPS2501IN**



**TOPS2502IN**



**TOPS2537IN**



**TOPS2531IN**



**TOPS2532IN**



**TOPS2121IN**



**TOPS2122IN**



**TOPS2576IN**



TESTED BY PROFESSIONAL FUTSAL PLAYERS



# TOP-FLEX

# we are  
**FUT  
SAL**



**TOPS2504TF**



**TOPS2528TF**



**TOPS2501TF**



**TOPS2532TF**



**TOPS2121TF**



TESTED BY PROFESSIONAL FUTSAL PLAYERS





**AMANDINHA** | 8-TIME BEST FUTSAL  
PLAYER IN THE WORLD





# REGATE REBOUND

JOMA SPORTECH

ADJUSTMENT

# We are  
**FUT  
SAL**



VENTILATION

PROTECTION  
PROTECTION



REACTIVITY

DUAL:REACTIVE  
REACTIVITY

DURABILITY

DURABILITY



TESTED BY PROFESSIONAL FUTSAL PLAYERS



# REGATE REBOUND

# We are  
**FUT  
SAL**



Futsal shoes. Model designed for professional futsal, where players aim to maximize performance with their footwear. Tested by professional footballers.

The upper is mostly crafted from breathable mesh thanks to the perforations of the **VTS** system. It also features the thermosealed adjustment system, **JOMA SPORTECH**, along with the same material protecting the front part (**PROTECTION** technology).

**DUAL REACTIVE** midsole with a bottom part made of **REACTIVE BALL**, a cushioning and reactive material. The upper part is made of more stable phylon.

**DURABILITY** rubber outsole with high resistance to abrasion and quality. It adheres to indoor surfaces without leaving marks on the court.

TESTED BY PROFESSIONAL FUTSAL PLAYERS





# REGATE REBOUND

# we are  
**FUT  
SAL**



**RRES2504IN**



**RRES2501IN**



**RRES2502IN**



**RRES2576IN**

TESTED BY PROFESSIONAL FUTSAL PLAYERS





# we are  
**FUT  
SAL**



TESTED BY PROFESSIONAL FUTSAL PLAYERS





# INVICTO

# we are  
**FUT  
SAL**

JOMA SPORTECH

ADJUSTMENT



VENTILATION

PROTECTION

PROTECTION

EXO  
COUNTER

PROTECTION

FOAM:REACTIVE

REACTIVITY

DUAL:REACTIVE

REACTIVITY

FLEXO

FLEXIBILITY

DURABILITY

DURABILITY

TESTED BY PROFESSIONAL FUTSAL PLAYERS





# INVICTO

# # We are FUT SAL



Futsal shoes, designed for professional use thanks to their ability to deliver maximum performance on the court. Their richness in technology enables their use in high-level futsal.

The upper is crafted from mesh with a Jacquard finish. It has been enhanced with the **VTS** micro-perforation system to provide extra breathability. The fit and support are ensured through the thermosealed **JOMA SPORTECH** system. It also features the same material on the toe, which functions as **PROTECTION** technology.

The **EXO COUNTER** rear counter provides stability during direction changes.

**DUAL REACTIVE** midsole: the bottom part is made of **FOAM REACTIVE** to cushion impacts, and the upper part is made of more stable phylon.

**DURABILITY** rubber outsole with high resistance to abrasion and quality. It adheres to indoor surfaces without leaving marks on the court. Featuring **FLEXO** lines for multidirectional movements.



TESTED BY PROFESSIONAL FUTSAL PLAYERS



# INVICTO

# we are  
**FUT  
SAL**



**INVS2509IN**



**INVS2516IN**



**INVS2528IN**



**INVS2576IN**



TESTED BY PROFESSIONAL FUTSAL PLAYERS



# F5 REACTIVE

# # we are FUT SAL



FORM:REACTIVE  
REACTIVITY

DUAL:REACTIVE  
REACTIVITY

VTS  
VENTILATION

PROTECTION  
PROTECTION



STABILITY

DURABILITY

DURABILITY

TESTED BY PROFESSIONAL FUTSAL PLAYERS





# FS REACTIVE

# # We are FUT SAL



Futsal shoes. This is one of Joma's top-performing models, rich in technology and partly crafted from leather to provide only high performance to professional footballers.

The upper is mostly made from leather. This material is perfect for this sport due to its durability, flexibility, breathability, and good ball contact. Reinforced ventilation with **VTS** technology.

**PROTECTION** reinforcement on the toe.

**DUAL REACTIVE** midsole: the bottom part is made of **FOAM REACTIVE** to cushion impacts, and the upper part is made of more stable phylon.

**DURABILITY** rubber outsole with high resistance to abrasion and quality. It adheres to indoor surfaces without leaving marks on the court. The geometric **ROTATION** structures offer superior flexibility.



TESTED BY PROFESSIONAL FUTSAL PLAYERS



**FSS**  
*REACTIVE*

# we are  
**FUT  
SAL**



**FSS2501IN**



**FSS2502IN**



**FSS2510IN**



**FSS2529IN**



**FSS2576IN**



**FSS2501TF**



**FSS2502IN**

TESTED BY PROFESSIONAL FUTSAL PLAYERS





# TACTICO

# we are  
**FUT  
SAL**



JOMA SPORTECH

ADJUSTMENT



VENTILATION

PROTECTION

PROTECTION

**DURABILITY**

DURABILITY



STABILITY

TESTED BY PROFESSIONAL FUTSAL PLAYERS





# TACTICO

# We are  
**FUT  
SAL**



Futsal shoes. The Tactico model delivers maximum performance on indoor surfaces. That's why it's recommended for professional footballers seeking comprehensive shoes rich in technology.

The upper is crafted from mesh with a custom Jacquard finish, very lightweight, and featuring **VTS** perforations for breathability. The thermosealed adjustment system, **JOMA SPORTECH**, molds the shoes to the foot while maintaining lightness. The same material covers the front part, serving as **PROTECTION** technology.

Phylon midsole to absorb the impact of each step.

**DURABILITY** rubber outsole with high resistance to abrasion and quality. It adheres to indoor surfaces without leaving marks on the court. The geometric **ROTATION** structures offer superior flexibility.



TESTED BY PROFESSIONAL FUTSAL PLAYERS



# TACTICO

# we are  
**FUT  
SAL**



**TACW2476IN**

TESTED BY PROFESSIONAL FUTSAL PLAYERS





# MUNDIAL

# we are  
**FUT  
SAL**



VENTILATION

PROTECTION

PROTECTION

**FLEXO**

FLEXIBILITY

**DURABILITY**

DURABILITY



TESTED BY PROFESSIONAL FUTSAL PLAYERS



# MUNDIAL

# we are  
**FUT  
SAL**



Futsal shoes. This dynamic and durable model will meet the standards of professional futsal. Perfect for players seeking speed.

The upper is crafted combining natural leather, synthetic materials, and breathable mesh. This combination results in a lightweight, durable, and flexible upper. It incorporates the **VTS** perforation system to enhance sweat ventilation.

**PROTECTION** reinforcement on the toe.

Phylon midsole for increased stability and cushioning.

**DURABILITY** rubber outsole with high resistance to abrasion and quality. It adheres to indoor surfaces without leaving marks on the court. With **FLEXO** lines for multidirectional movements.

TESTED BY PROFESSIONAL FUTSAL PLAYERS





# MUNDIAL

# we are  
**FUT  
SAL**



MUNS2501IN



MUNS2502IN



MUNS2503IN



MUNS2507IN



MUNS2509IN



MUNS2511IN



MUNS2501TF



MUNS2502TF



MUNS2511TF



TESTED BY PROFESSIONAL FUTSAL PLAYERS



# GAMBETA

# we are  
**FUT  
SAL**



VENTILATION

PROTECTION  
PROTECTION

STABILIS  
STABILITY

FORM:REACTIVE  
REACTIVITY

**DURABILITY**

DURABILITY



TESTED BY PROFESSIONAL FUTSAL PLAYERS



# GAMBETA

# We are  
**FUT  
SAL**



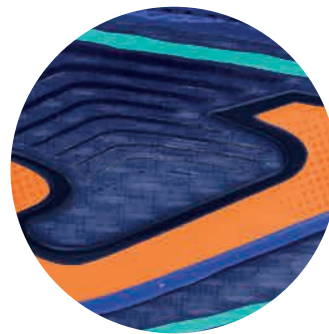
New futsal shoe model. Designed for professional futsal, Gambeta provides high performance in cushioning and comfort. That's why it's perfect for pivot and defensive players, with good technique and strong play.

The upper is crafted combining synthetic leather and breathable mesh. This combination results in a lightweight, durable, and flexible upper. It incorporates the **VTS** perforation system to enhance sweat ventilation.

**PROTECTION** reinforcement on the toe.

The midsole is made with dual material. The bottom part is made of **FOAM REACTIVE** to cushion impacts, and the top part is made of high-density phylon. Additionally, it features a rear **STABILIS** to provide the footwear with more stability.

**DURABILITY** rubber outsole with high resistance to abrasion and quality. It adheres to indoor surfaces without leaving marks on the court.



TESTED BY PROFESSIONAL FUTSAL PLAYERS





# GAMBETA

# we are  
**FUT  
SAL**



**GAMS2501IN**



**GAMS2502IN**



**GAMS2504IN**



**GAMS2527IN**



TESTED BY PROFESSIONAL FUTSAL PLAYERS



# LIGA S

# we are  
**FUT  
SAL**



JOMA SPORTECH

ADJUSTMENT



VENTILATION

PROTECTION

PROTECTION

FLEX  
FLEXIBILITY

DURABILITY

DURABILITY



TESTED BY PROFESSIONAL FUTSAL PLAYERS



# LIGA S

# We are  
**FUT  
SAL**



Futsal shoes. Developed for players who master technical gestures and aim for high performance on the court.

The upper is crafted combining breathable synthetic mesh material with **VTS** perforations to enhance sweat ventilation. The construction using both materials results in a lightweight, flexible upper with good ball contact.

**PROTECTION** reinforcement on the toe.

Improved phylon midsole for increased stability, cushioning, and comfort.

**DURABILITY** rubber outsole with high resistance to abrasion and quality. It adheres to indoor surfaces without leaving marks on the court. Featuring **FLEXO** lines for multidirectional movements.



TESTED BY PROFESSIONAL FUTSAL PLAYERS



# LIGON J

# we are  
**FUT  
SAL**



LIGS2502IN



LIGS2505IN



LIGS2509IN



LIGS2527IN



LIGS2505TF



LIGS2509TF

TESTED BY PROFESSIONAL FUTSAL PLAYERS







***PRODUCT MARKETING***



# we are  
**FUT  
SAL**



REACTIVE TECHNOLOGIES SHOES BOX





# we are  
**FUT  
SAL**



FUTSAL SHOES GENERIC BOX





# we are  
**FUT  
SAL**

 **joma**